

# FNC Tacho Analog Output Versus Speed

Current / voltage output



## FNC Tacho Analog Output Versus Speed 50 mm & 58 mm Housing



### Features

- Industry 58 mm shaft version
- Industry 58 mm end hollow shaft version
- Robust mechanical and electrical construction
- Protection up to IP67
- 0-10V voltage / 4-20mA current output versus speed

### Output Options :

- 0-10VDC Voltage
- 0-5VDC Voltage
- 4-20mA current

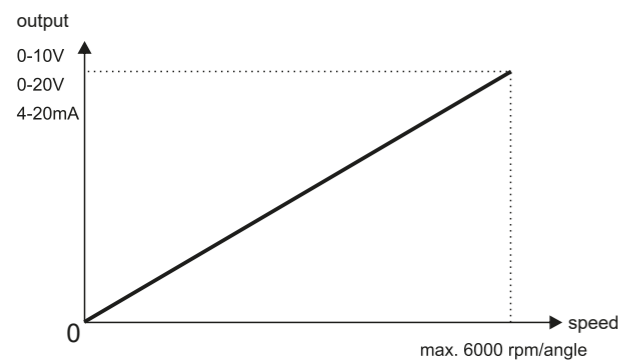
### Technical data - electrical ratings

Voltage supply	10-30VDC
Protection:	Output short circuit protection. Reverse polarity protection
Consumption w/o load	≤60 mA (24 VDC)
Output signals	0-10VDC Voltage output 0-5VDC Voltage output 4-20mA current output
Measuring range	up to 6000 rpm
Interference immunity	DIN EN 61000-6-2
Emitted interference	DIN EN 61000-6-4
Approval	CE

### Technical data - mechanical design

Dimensions (flange)	ø58 mm
Shaft loading	≤140 N axial ≤240 N radial
Protection DIN EN 60529	IP54, IP65
Operating speed	≤10000 rpm
Starting torque	≤0.025 Nm (IP 67)
Materials	Housing: Aluminium Flange: Aluminium Shaft : Stainless steel
Shaft/Hollow shaft diameter:	6, 8, 10, 12 mm ( other diameters on request )
Bearings lifetime:	2x10 <sup>9</sup> rev. at 100% of full rated shaft load (minimum)
Operating temperature	-20...+85 °C
Storage temperature	-30 °C up to +90 °C
Weight approx.	250 g

### Pulse Diagram



### Accessories

**Connectors and cables**  
CRM1205 M12 4 poles female connector or see page 206

**Mounting coupling**  
PF481010 plastic or see page 204

**Mounting accessories**  
SF58B square flange or see page 202-203

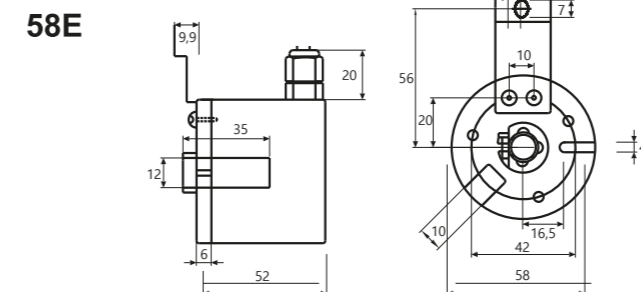
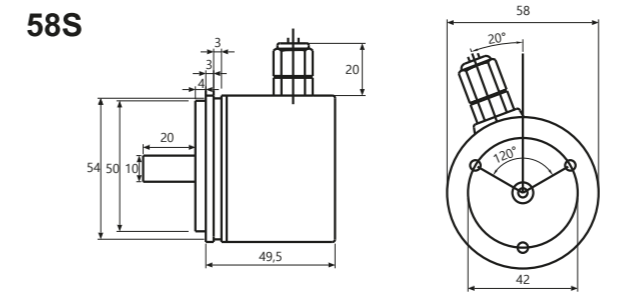
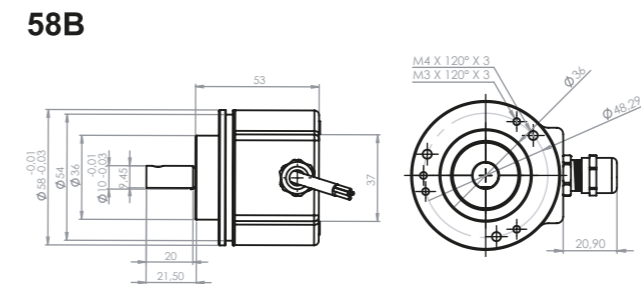
# FNC Tacho Analog Output Versus Speed

Mechanical Dimensions  
Cable/Connector Wiring, Part Number



## FNC Tacho Analog Output Versus Speed

### Mechanical Dimensions



### Encoder Part Number

**FNC T 58 B 8 C1 T15 30V - R2**

- T** : Tacho Analog Output
- Housing:**  
50 : 50mm    58 : 58mm
- Flange Type:**  
E : End hollow shaft  
B : Shaft clamping flange  
S : Servo flange
- Shaft diameter : 4, 6, 8, 10, 12, 14**  
Other dimensions on request
- Output type :**  
C1 : 4-20mA  
V1 : 0-10V  
V2 : 0-5V

**Electrical Connections:**  
Cable  
R2 : radial 2m, shield not connected (standart)  
A2 : axial 2m, shield not connected (standart)  
RZ1205 : M12 5pin connector

**Supply Voltage:**  
5: 5V in/out 30: 5-30V in/out

**Output speed**  
T60 : Tacho max 6000 rpm  
T30 : Tacho max 3000 rpm  
T15 : Tacho max 1500 rpm  
T960 : Tacho max 0-10V/ 960 rpm  
T03 : Tacho max 300 rpm